



Operational Guide
Traffic Gate

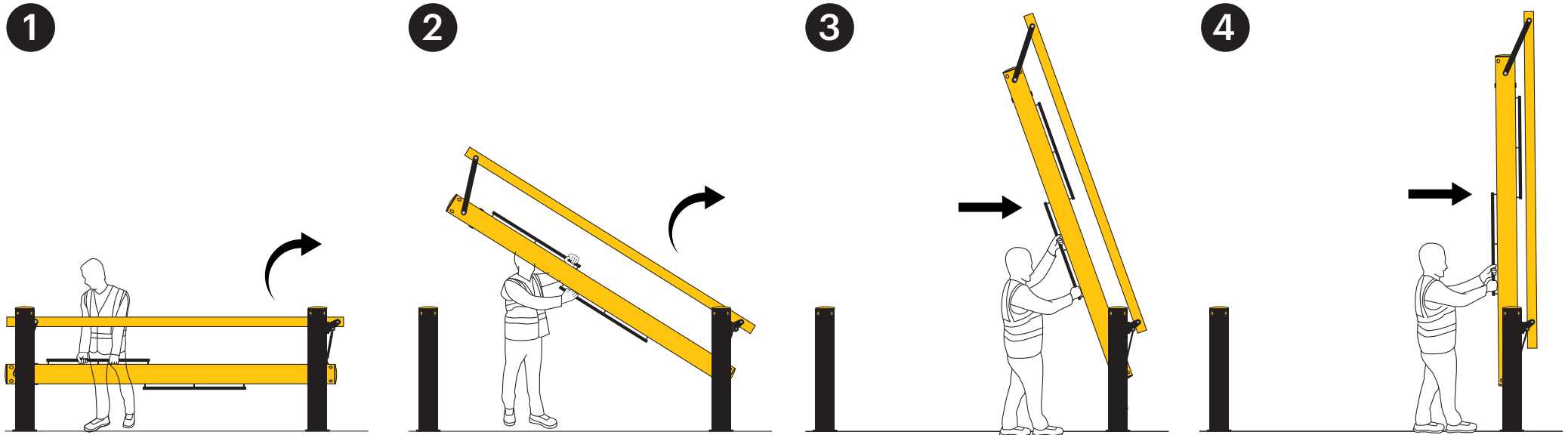
Traffic Gate



WARNING:

- Inspect product before use.
- Do not use the gate if any component is damaged.
- Observe the person & object clear zones.
- Ensure the gate is clear of people and objects when opening or closing.
- Do not stand under the gate when it is being open or closed.
- Ensure the gate is fully raised when opening the gate.
- Check that the locking device is engaged when the gate is open.
- Do not let go of the handles until the gate is fully open or closed.
- Ensure the gate is fully lowered when closing the gate.
- Only use approved components with this product.

Opening



Before you start to lift the gate, please ensure that an area around the hinge end of the gate is clear of people and objects. Use both hands to gently lift the gate using the top handle.

Slowly walk the gate towards the hinged end. When the height of the top handle comes out of reach and uncomfortable, use your right hand to grab the bottom handle.

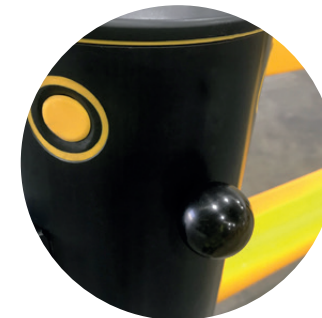
Continue to walk the gate to the hinge end. You will feel the gate gas strut take the weight of the gate and pull towards the vertical position.

Gently ease the gate to its final resting position. You will hear and feel the locking mechanism click in to place. It is now safe to remove your hands off the gate.



Person / object clear zone

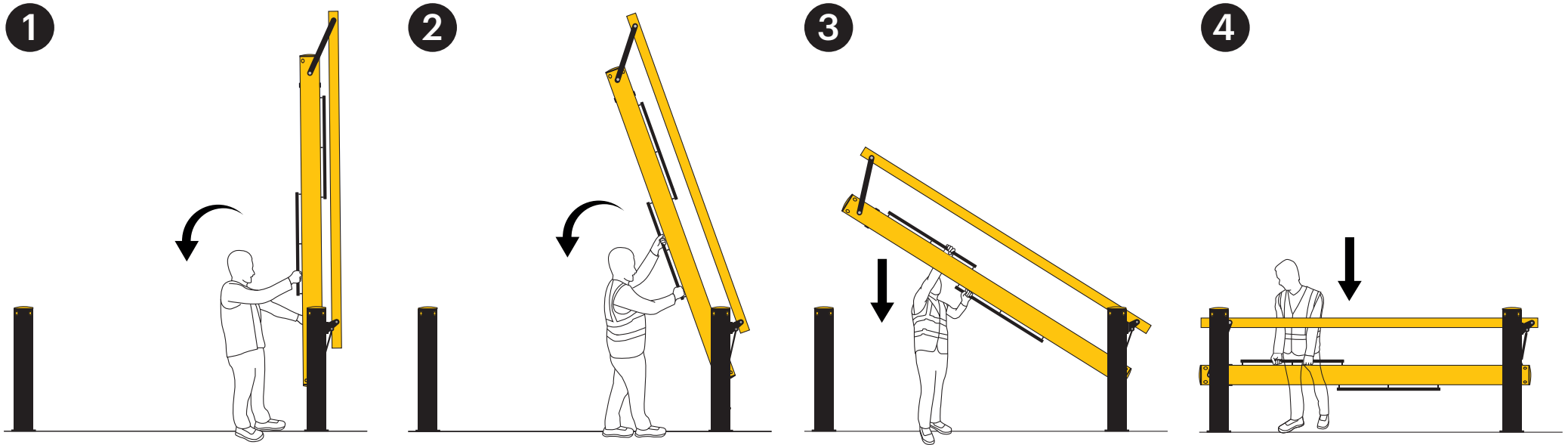
A-SAFE advise that a person clear zone is marked out on the floor. This warns of danger when the gate is being operated.



Locking mechanism

A positive lock gives feedback and peace of mind when the gate is in the fully open position. It then requires an action to unlock the gate and close upon demand.

Closing



Before you start to lower the gate, please ensure that an area around the hinge end of the gate is clear of people and objects. Use your left hand to release the locking mechanism. Gently pull the gate towards you.

Slowly walk backwards, holding the lower handle with both hands, The gas strut will aid the speed of the closure.

When the gate is at a comfortable descending height, move your right hand to the top handle. As the gate descends further, move your left hand to the top handle.

Lower the gate gently onto to the locator pin. Ensure that the gate is fully down and in its final resting position before you remove your hands.

Double-sided gate post signage

Optional sign caps can be installed on the gate post ends and provides specific messages depending on the direction of approach.



Selection of signage available

If you have any questions about this product please contact the product management team at
A-SAFE HQ - Product.Management@asafe.com

